

Securities issues statistics - debt securities

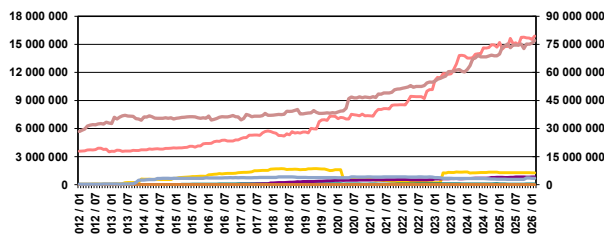
Outstanding amounts										
Month	Total	Monetary Financial Institutions (MFI)		Financial corporations, except the MFI, and Insurance corporations and Pension funds				Non-financial corporations (S.11)	General Government (S.13)	
		Central Bank (S.121)	Deposit-taking corporations, except the central bank (S.122)	Other financial intermediaries (S.125)	Financial auxiliaries (S.126)	Captive financial institutions and money lenders (S.127)	Insurance corporations and Pension funds (S.128 and S.129)			
(thousand eur)										
2025 / 02	96 433 927	0	14 501 425	1 281 733	71 201	3 985 872	0	2 958 274	73 635 422	
2025 / 03	97 063 468	0	14 776 353	1 274 033	71 798	3 851 635	0	2 907 905	74 181 744	
2025 / 04	98 090 327	0	14 773 193	1 274 033	63 770	3 877 680	0	2 822 342	75 279 309	
2025 / 05	96 931 137	0	15 642 473	1 274 033	62 625	3 949 429	0	2 825 794	73 176 783	
2025 / 06	97 804 913	0	15 080 848	1 274 034	59 751	3 972 863	0	2 827 208	74 590 209	
2025 / 07	98 035 611	0	15 173 920	1 274 211	60 265	4 129 579	0	2 802 796	74 594 839	
2025 / 08	97 724 229	0	14 904 044	1 274 251	59 872	4 093 700	0	2 801 963	74 590 399	
2025 / 09	99 141 866	0	15 751 688	1 274 271	59 908	4 112 204	0	2 777 469	75 166 326	
2025 / 10	96 730 314	0	15 766 764	1 274 274	59 494	4 128 718	0	2 787 295	72 713 769	
2025 / 11	99 780 029	0	15 690 158	1 271 504	73 077	4 044 474	0	3 528 626	75 172 190	
2025 / 12	99 728 621	0	15 668 592	1 271 876	72 298	4 077 331	0	3 552 809	75 085 715	
2026 / 01	100 042 736	0	15 516 194	1 268 999	72 318	4 116 961	0	3 421 877	75 646 386	
2026 / 02	101 782 677	0	15 887 650	1 269 038	72 338	4 148 959	0	3 392 597	77 012 096	

Gross issues										
Month	Total	Monetary Financial Institutions (MFI)		Financial corporations, except the MFI, and Insurance corporations and Pension funds				Non-financial corporations (S.11)	General Government (S.13)	
		Central Bank (S.121)	Deposit-taking corporations, except the central bank (S.122)	Other financial intermediaries (S.125)	Financial auxiliaries (S.126)	Captive financial institutions and money lenders (S.127)	Insurance corporations and Pension funds (S.128 and S.129)			
(thousand eur)										
2025 / 02	4 029 137	0	7 740	0	30	133 919	0	48	3 887 400	
2025 / 03	1 020 279	0	432 187	0	570	35 663	0	1 059	550 800	
2025 / 04	1 264 539	0	55 370	0	2 170	59 508	0	1 992	1 145 500	
2025 / 05	1 774 564	0	1 008 216	0	89	72 703	0	9 456	684 100	
2025 / 06	1 563 413	0	82 265	1	8 606	49 973	0	3 868	1 418 700	
2025 / 07	239 696	0	6 627	177	564	232 243	0	85	0	
2025 / 08	88 629	0	10 000	40	102	78 294	0	194	0	
2025 / 09	1 711 793	0	1 029 333	20	116	85 780	0	20 944	575 600	
2025 / 10	1 421 966	0	743 163	3	271	136 712	0	15 517	526 300	
2025 / 11	3 487 540	0	153 865	230	13 618	103 975	0	753 251	2 462 600	
2025 / 12	122 937	0	0	372	0	85 954	0	36 611	0	
2026 / 01	1 393 444	0	800 000	123	20	51 896	0	5	541 400	
2026 / 02	3 467 847	0	507 827	39	60	167 687	0	80 635	2 711 600	

Net issues										
Month	Total	Monetary Financial Institutions (MFI)		Financial corporations, except the MFI, and Insurance corporations and Pension funds				Non-financial corporations (S.11)	General Government (S.13)	
		Central Bank (S.121)	Deposit-taking corporations, except the central bank (S.122)	Other financial intermediaries (S.125)	Financial auxiliaries (S.126)	Captive financial institutions and money lenders (S.127)	Insurance corporations and Pension funds (S.128 and S.129)			
(thousand eur)										
2025 / 02	3 202 022	0	-708 219	0	-29	44 209	0	-842	3 866 903	
2025 / 03	633 460	0	278 864	-7 700	570	-138 175	0	-50 900	550 800	
2025 / 04	1 024 339	0	1 840	0	-7 997	22 497	0	-86 101	1 094 100	
2025 / 05	-1 171 435	0	868 788	0	-1 146	68 432	0	2 919	-2 110 429	
2025 / 06	877 005	0	-558 574	1	-2 874	18 884	0	868	1 418 700	
2025 / 07	130 522	0	2 739	177	514	152 007	0	-24 915	0	
2025 / 08	-310 010	0	-268 259	40	-393	-40 091	0	-1 306	0	
2025 / 09	1 454 224	0	848 111	20	36	14 513	0	15 944	575 600	
2025 / 10	-2 423 811	0	13 346	3	-414	13 331	0	9 388	-2 459 464	
2025 / 11	3 049 996	0	-76 564	-2 770	13 583	-87 724	0	740 871	2 462 600	
2025 / 12	-50 694	0	-20 301	372	-779	31 526	0	23 987	-85 500	
2026 / 01	292 810	0	-151 568	-2 877	20	37 330	0	-131 495	541 400	
2026 / 02	1 727 751	0	370 350	39	20	28 677	0	-29 835	1 358 500	



Outstanding amounts (thousand EUR)



Gross issues (thousand EUR)

